

UTA Since 1980

Washers & Machines

PRODUCT CATALOGUE



UTA-2019 Mar.

UTA 有達工業股份有限公司
UTA Auto Industrial Co., Ltd.

41280 台中市大里區工業十二路 1 號
No.1, Gongye 12th Rd., Dali Dist., Taichung City 41280, Taiwan
TEL: +886-4-2491 7378 FAX: +886-4-2491 7379
Email: utaauto@uta.com.tw

Designed by Advertising +886-4-2312 7072

www.uta.com.tw

TIME LINE 企業沿革

1980 Founded
1994 UL, CSA, VDE, CB Listed
1998 ISO 9001
2001 National Innovation Research Award
2003 Golden Finger Enterprise Award

1980 公司成立
1994 通過UL、CSA及VDE安全認證
1998 ISO 9001
2001 國家創新研究獎
2003 台中市金手獎



COMPANY INTRODUCTION



企業介紹



UTA was originally founded in 1980 from the assembly machine builder. We have developed and steadily grown to encompass the fastener assembly machines, wire connectors, and sealing washers. All the crews are dedicated to bringing a cost effective and reliable solution to the wiring and the fastener industries.

Being Machine Builder

The projected team serves customers with the reliable assembly solutions, from feeder, assembly, in-line optical sorting, counting to quantity packing. Being unique globally having the ability to manufacture the multi-piece fastener assembly machines with extensive range. All machines are designed and built in-house from the quality materials, precision machining, and skilled engineers to ensure clients the quality equipment, provide the decades of repeatable service with minimal maintenance. Various different markets are covered by the different models. These being:

- Blind Rivet Assembly Machines.
- Nail and Screw Assembly Machines.
- Washer Assembly onto Fasteners Machines.
- Cable Clip Assembly Machines.
- Electrical Terminal Soldering Machines.
- Electrical Terminal Assembly Machines.
- In-line Optical Sorting, Counting and Boxing Units

Machines are designed to the CE directives and other safety requirements. As the units are all in-house designed, fabricated and assembled, inclusive of electrical and electronic functions, quality control is maintained. The modular design ensures that if subsequent similar equipment is purchased, it will be easy to maintain with the minimum spares stock. Bespoke systems can be designed to be incorporated into the production process if required.

Being Sealing Washer Manufacturer

As the source for reliable sealing and cushioning washers. The high quality washers are used widely in industrial, commercial and residential construction. UTA is committed to offerings the builders the successful sealing solution. The wide-selection for diverse screws or bolts seals.

- EPDM (conductive) rubber Bonded Washer (powder paint)
- Cut EPDM washer (Insulated)
- Umbrella washers (BAZ)
- Nylon washers
- Soft rubber lock washers

Being Wire Connector Manufacturer

The professional manufacturer of electrical terminals and wiring accessories. We are dedicated to developing the quick and easy installation for wiring job. The connectors go through the stranded wire and solid wire, start with the smallest gauge AWG 26 size (0.3 mm²). The insulators come with the vinyl, P.P., nylon and heat shrink tubing. Connectors are approved by the international certificates, UL, cUL and VDE. Various application are covered by the different connectors.

- Butt Connector (crimp type)
- Heat Shrink Connector (water proof)
- Quick Splice (no-stripping)
- Push-in Wire Connector (no-taping)
- Cable Lugs / Closed-End / Wire nut (house wiring)
- Crimping Tools

Customers from over 50 countries are using UTA machines or products. The team is very experienced in the multi-nation business, and dedicated to providing the customized service, with the bonded strategy partnership. Thanks for reading UTA, we look forward to receiving your comments soon.

有達工業創立於1980年，製造組立專用機。30多年來，穩定中求發展，建立了三個生產事業群 - 扣件二次加工專用機，接線端子，防水華司。全體員工致力於提供業界有效的解決方案。

機器設備製造

提供客戶可靠的裝配設備，整合送料，組裝，線上檢測，計數到包裝。獨特的技術，提供多件工件的組裝。所有機器，均由廠內整合研發，加工與組裝，使用高品質的物料，高精密的加工設備，與經驗豐富的工程師，確保客戶取得的機器品質，並提供最經濟的維護成本，與持續不斷的售後服務。不同的產品，選用不同的機器 -

- 拉釘自動組裝機。
- 螺絲自動組裝機。
- 華司與扣件組裝機。
- 線扣與釘組裝機。
- 端子自動焊接機。
- 端子自動裝配機。
- 線上影像檢測，計數，與包裝整合設備。

機器可符合CE與其它安規要求。零件，電控的設計與組裝，均於廠內完成，能確保功能與品質。模組化的設計，可提供客製化的服務，並結合客戶現有的生產條件。

防水華司製造

提供客戶可靠的防水與緩衝墊片製造商。高品質的華司，可廣泛應用於工業，商業與住宅上。我們有信心提供成功的防水華司。針對不同的螺絲與環境，客戶可選用多樣的防水墊片。

- EPDM (導電) 橡膠粘鐵華司 (烤漆用)。
- 切片 EPDM 華司 (絕緣)
- 碗型華司 (BAZ)
- 尼龍墊片
- 軟性橡膠齒形華司

接線端子製造

我們致力於發展快速簡單的接線成品。端子可配合絞線與單芯線，從小線徑 AWG 26 (0.3 mm²) 開始，絕緣材質有 PVC, P.P., 尼龍，與熱縮管等，也有UL, cUL, VDE 等國際認證。不同的應用，可選用不同的端子 -

- 中接管 (壓接型)
- 熱縮中接管 (防水型)
- 接線夾 (免剝線)
- 接線盒 (免膠帶)
- 銅管端子 / 閉端子 / 旋轉端子 (室內外)
- 壓接鉗

全球超過50個國家，正在使用有達工業的設備或產品。豐富的國際商務經驗，與緊密的策略夥伴關係，一定可以滿足客戶對品質與交期上的要求。謝謝您的閱讀，我們期待您進一步的訊息。



Washers
華司

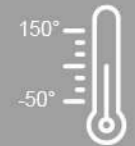
A waterproof, oil proof and anti-loosening solutions.

防水、防油、防止鬆脫的解決方案

FEATURE 特性



High resistance to ozone, weathering, aging, heating, and abrasion.
具抗臭氧、耐候性、抗老化、抗高溫，及抗化學性。



Flexible service temperature from -50°C to 150°C(302°F).
可適用環境溫度從 -50°C 到 150°C(302 °F)。



Thermal shock durability.
耐熱衝擊。



Ultraviolet radiation resistance.
耐紫外線。



The longest average service life to waterproof roof.
屋頂產業平均壽命最長。



BONDED 黏鐵華司

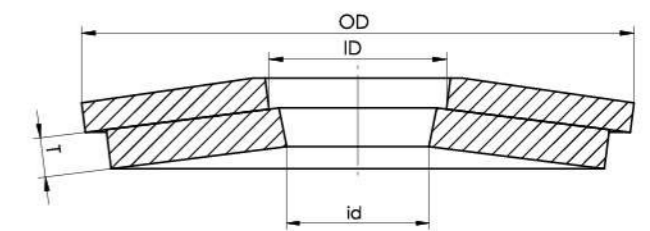
Face material: Stainless Steel / Aluminum / Galvanized Steel
Bottom material: EPDM (Black / Gray)
Hardness (Shore A): Non-Conductive EPDM: 55±5, 75±7 degrees (Black / Gray)
Conductive EPDM: 70±5 degrees (Black)
Temperature resistance (20 minutes):
Non-conductive EPDM: 170 °C(338 °F) (Black) / 150 °C(302 °F) (Gray)
Conductive EPDM: 220 °C(428 °F) (Black)



面材：不鏽鋼板 / 鋁板 / 鍍鋅板
底材：EPDM (黑/灰)
硬度(Shore A)：非導電EPDM：55±5, 75±7 度(黑/灰)
導電 EPDM：70±5 度(黑)
耐溫(20分鐘)：非導電EPDM：170°C(338°F) (黑) / 150°C(302°F) (灰)
導電EPDM：220°C(428°F) (黑)

Specification 規格表 OEM / ODM available

Part No.	Screw Size (Gauge)	Metal OD mm (inch)	Metal ID mm (inch)	EPDM id mm (inch)	EPDM T mm (inch)
SEB / SEG AEB / AEG GEB / GEG	4.2 (#8)	11.0(0.433)	4.8(0.189)	3.4(0.134)	1.4 (0.055)
	4.8 (#10)	14.0 (0.551)	5.4(0.213)	3.8(0.150)	
	5.5 (#12)	11.0 (0.433)	5.7(0.224)	4.0(0.156)	
SEB-C AEB-C GEB-C	5.5 (#12)	16.0 (0.630)	5.8(0.228)	4.3(0.169)	2.0 (0.079)
	6.3 / 6.5 (#14)	19.0 (0.748)	6.8(0.268)	5.2(0.205)	2.5 (0.098)
	M8 (5/16")	22.0 (0.866)	8.8(0.346)	7.2(0.283)	3.0 (0.118)
	M10 (3/8")	25.0 (0.984)	11.0(0.4330)	9.4(0.370)	
	M12 (1/2")	28.0 (1.102)	13.0(0.512)	11.0(0.433)	



- Variety Metal**
Stainless Steel / Aluminum / Galvanized Steel
- Conical Design**
Conformed seal, minimizes vibration
- EPDM Rubber**
Highly resistance of weather & O3
- Excellent electrical conductivity**
Suitable for powder painting

- 可搭配多樣金屬材質
不銹鋼板(304&316) / 鋁板 / 鍍鋅板
- 減震錐形設計
絕佳貼合度可緩衝並減少震動
- EPDM橡膠(黑/灰)
高度耐候性與抗臭氧
- 優異的導電性能
適用於粉體烤漆

BAZ 碗型華司

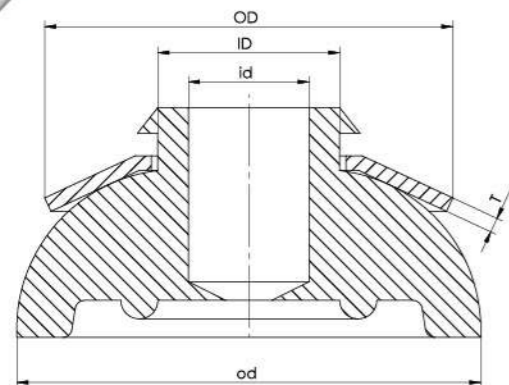


Specification 規格表 OEM / ODM available

Part No.	Screw Size (Gauge)	Metal OD mm (inch)	Metal ID mm (inch)	EPDM/TPS od mm (inch)	EPDM/TPS id mm (inch)
BAZ+A2		22.0/24.0			
BAZ+GAL	6.3(#14)	(0.866)	10.2(0.402)	25.0(0.984)	6.5(0.256)
BAZ+ALU		(0.945)			



1. Stainless Steel / Galvanized Steel / Aluminum
2. EPDM (Black) / TPS (Black / Color customizable)
3. Hardness (Shore A): 75 +/- 7 degrees
EPDM Temperature resistance (20 minutes): 170 °C(338 °F)
TPS Temperature resistance (20 minutes): 120 °C(248 °F)
4. Double Sealing Design - Conformed seal
5. Wide bottom design - Stronger waterproof



1. 不銹鋼板 / 鍍鋅板 / 鋁板
2. EPDM (黑) / TPS (黑 / 顏色可客製)
3. 硬度 (Shore A): 75±7 度
EPDM耐溫 (20分鐘): 170 °C(338 °F)
TPS 耐溫 (20分鐘): 120 °C(248 °F)
4. 雙重密封設計
開口與底部凹槽設計, 可與螺絲和物體高度密合
5. 寬底部設計
優異防水效果

CUT 切片

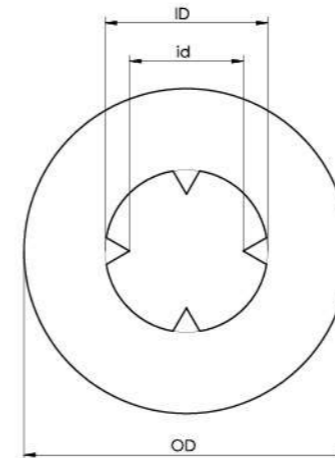
Material: EPDM (Black / Gray / Color customizable)
Hardness (Shore A): 80 ± 5 degrees (Min 60, Max 90 degrees)
Temperature resistance (20 minutes):
Black: 170°C (338°F) / 200°C (392°F)
Gray: 170°C (338°F)
Insulated Black: 170°C (338°F)

材質: EPDM (黑/灰/可客製)
硬度(Shore A): 80±5度, 最軟60度, 最硬可達90度
耐溫(20分鐘):
黑色: 170°C (338°F) / 200°C (392°F)
灰色: 170°C (338°F)
絕緣黑色: 170°C (338 °F)



Specification 規格表 OEM / ODM available

Part No.	Screw Size (Gauge)	OD mm (inch)	EPDM T mm (inch)	Flute	
OEB OEG OEB-I	4.2 (#8)	7.5(0.295)	1.4(0.055) 2.2(0.086) 2.6(0.102) 2.8(0.110) 3.2(0.126) 4.0(0.157) 4.2(0.165)	SM F4 F6	
	4.8(#10)	8.5(0.335)			
	5.5(#12)	10.5(0.413)			
	6.3(#14)	11.4(0.449)			
	7.5(#17)	13.95(0.550)			
	M3				8.0(0.315)
		M4.5			13.0(0.512)
					18.0(0.709)
		23.0(0.906)			
	M8 (5/16")	13.4(0.528)			
M10 (3/8")	15.0(0.591)				
OEB-C	For Rivet	8.0(0.315)	1.4(0.055)		
		15.0(0.590)	1.6(0.063)		



CUP M型華司

Material: Stainless Steel / Copper
面材: 不銹鋼板 / 銅板

Specification 規格表 OEM / ODM available

Part No.	Screw Size (Gauge)	OD mm (inch)	ID mm (inch)	EPDM T mm (inch)
Cup M-A2	M4.5	15.0 (0.591)	5.4 (0.213)	0.4 (0.016)
Cup M-CO	M4.5	20.0 (0.787)	5.4 (0.213)	0.4 (0.016)
	M4.5	25.0 (0.984)	5.4 (0.213)	0.4 (0.016)



M-TYPE 黏鐵華司

Face material: Stainless Steel /
Copper / Aluminum
Bottom material: EPDM (Gray / Black)
Hardness (Shore A):
Gray EPDM: 70±5 degrees
Conductive Black EPDM: 70±5 degrees
Temperature resistance (20 minutes):
Gray EPDM: 150 °C(302 °F)
Conductive Black EPDM: 200°C(392 °F)



面材：不鏽鋼板 / 銅板 / 鋁板
底材：EPDM (灰/黑)
硬度(Shore A)：
灰色EPDM：70±5度
導電黑色EPDM：70±5度
耐溫(20分鐘)：
灰色EPDM：150 °C(302 °F)
導電黑色EPDM：200 °C(392 °F)

Specification 規格表 OEM / ODM available

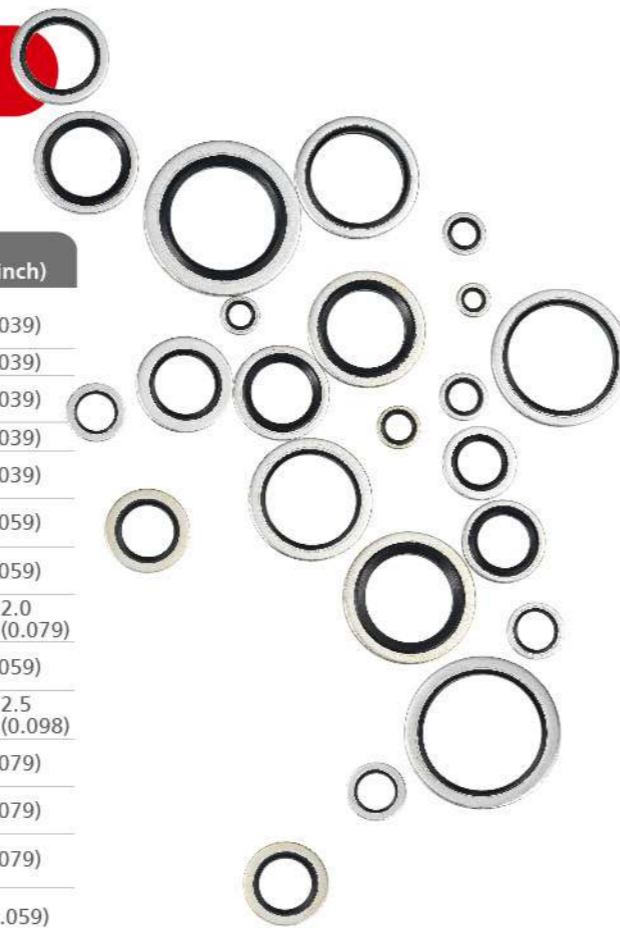
Part No.	Screw Size (Gauge)	Metal OD mm (inch)	EPDM T mm (inch)
M-A2	M4.5 (#9)	15.0 (0.591)	1.8 (0.071)
M-CO		20.0 (0.787)	
M-AL-C	4.8 (#10)	14.0 (0.551)	2.0 (0.079)
	M4 (#8)	16.0 (0.630)	1.4 (0.055)

OIL SEALS 油封

Material: Black NBR/HNBR + Carbon Steel
材質：黑色 NBR/HNBR + 碳鋼

Specification 規格表 OEM / ODM available

Part No.	Bolt Size (Gauge)	OD mm (inch)	ID mm (inch)	T mm (inch)	
OR-N	M4(5/32")	7.9 / 10.0 (0.311) / (0.394)	4.0 / 5.7 (0.158) / (0.224)	1.0(0.039)	
	M5(3/16")	8.9(0.350)	5.0(0.197)	1.0(0.039)	
	M6(1/4")	9.9/11.0 (0.390) / (0.433)	6.0 / 6.7 (0.236) / (0.264)	1.0(0.039)	
		M7	13.40(0.528)		8.5(0.335)
	M8(5/16")	13.0 / 13.9 (0.512) / (0.547)	8.7 / 8.0 (0.343) / (0.315)	1.0(0.039)	
	M10(3/8")	16.9 / 19.1 (0.665) / (0.752)	10.0 / 11.8 (0.394) / (0.465)	1.5(0.059)	
	M12(1/2")	18.9 / 22.0 (0.744) / (0.866)	12.0 / 13.7 (0.472) / (0.539)	1.5(0.059)	
		M14	21.9 / 22.2 (0.862) / (0.874)		14.0 / 15.8 (0.551) / (0.622)
	M16(5/8")	23.9 / 28.0 (0.941) / (1.102)	16.0 / 20.7 (0.630) / (0.815)	1.5(0.059)	
	M18	26.9 / 28.7 (1.059) / (1.130)	18.0 / 21.5 (0.709) / (0.847)	2.0 / 2.5 (0.079) / (0.098)	
	M20(3/4")	29.9 / 32.0 (1.177) / (1.260)	20.0 / 24.7 (0.787) / (0.972)	2.0(0.079)	
	M22	31.9 / 35.0 (1.256) / (1.378)	22.0 / 26.7 (0.866) / (1.051)	2.0(0.079)	
	M24(1")	35.9 / 37.0 (1.413) / (1.457)	24.0 / 28.7 (0.945) / (1.130)	2.0(0.079)	
	OR-HN	M12(1/2")	18.0(0.709)	12.7(0.5)	1.50(0.059)



TOOTH LOCK WASHER 齒型防鬆華司

Material: Gray TPE + Lock Washer
材質：灰色TPE + 齒形華司



Specification 規格表 OEM / ODM available

Part No.	Bolt Size (Gauge)	OD mm (inch)	Steel ID mm (inch)	Rubber id mm (inch)	T mm (inch)
TL	M12(1/2")	24.0(0.945)	12.5(0.492)	9.5(0.374)	3.1(0.122)

Material UV radiation resistance approval.
材料符合耐紫外線測試

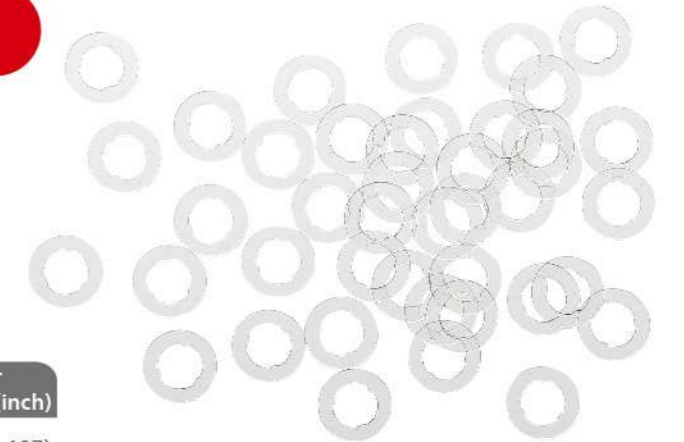
PC WASHER 塑膠華司

Material: Polycarbonate
Color: Nature color
Transparent, impact resistance and flame retardant.

材質：聚碳酸酯
顏色：自然色
無色透明，耐衝擊並具有阻燃特性

Specification 規格表 OEM / ODM available

Part No.	Screw Size (Gauge)	OD mm (inch)	ID mm (inch)	Id mm (inch)	T mm (inch)
PC	7.5(#18)	12.5(0.492)	7.6(0.299)	6.9(0.272)	0.5(0.197)



EPDM STRIP 墊片

Material: EPDM (Gray)
Hardness (Shore A): 55±5 degrees
Temperature resistance (20 minutes): 170°C (338 °F)
材質：EPDM (灰)
硬度(Shore A): 55±5 度
耐溫(20分鐘)：170°C (338 °F)

Specification 規格表 OEM / ODM available

W mm (inch)	L mm (inch)	T mm (inch)
50(1.97)	140(5.51)	2.0(0.08)

EPDM Rubber Highly resistance of weather&O3
Suitable for roofing and solar panel construction.
Sizes customizable
EPDM橡膠 高度耐候性與抗氧氣
適用於屋頂及太陽能設施建設
尺寸可客製化

BONDED EPDM STRIP 硫化鐵板

Material: Stainless Steel / Aluminum / Galvanized Steel
Bottom material: EPDM (Black / Gray)
Hardness (Shore A): Non-conductive EPDM: 55±5, 75±7 degrees (Black / Gray)
Conductive EPDM: 70±5 degrees (Black)
Temperature resistance (20 minutes):
Non-conductive EPDM: 170°C(338°F)(Black)/150°C(302 °F) (Gray)
Conductive EPDM: 220°C(428°F) (Black)

面材：不銹鋼 / 鋁板 / 鍍鋅板
底材：EPDM (黑/灰)
硬度(Shore A): 非導電EPDM: 55±5, 75±7度(黑/灰)
導電EPDM: 70±5度(黑)
耐溫(20分鐘)：非導電EPDM:170°C(338°F)(黑)/150°C(302°F)(灰)
導電EPDM:220°C(428°F)(黑)

Specification 規格表 OEM / ODM available

W mm (inch)	L mm (inch)	Metal T mm (inch)	EPDM T mm (inch)
145 ~ 303 (5.709 ~ 11.929)	1000 (39.37)	0.8 (0.031) 1.0 (0.039)	1.7 (0.067) 2.0 (0.079) 2.5 (0.098) 3.0 (0.118)



Assembly
組立專用機

Integrated Solution for Fastener Assembly

Feature & Benefit

1. Assembly with Inline optical sorting, counting and packing.
2. Automatic sorting missed assembly parts.
3. Sensors programmed from feeding to assembly, stop and start the motions automatically.
4. Durable life with torque limit.
5. Adjust speed quickly by inverter.
6. Visible stoppage and production volume from alarm table.
7. Minimize labor and space from integrating assembly and packing system.
8. Real time quality & production information from digital units.
9. ODM machine by the experienced developing team.

Application

Applied for assembling multiple parts as

- blind rivets
- Threading nails
- Drilling screws
- Timber screws
- Anchors
- drive pins
- cable clips etc.



自動化裝配專用機 整合方案

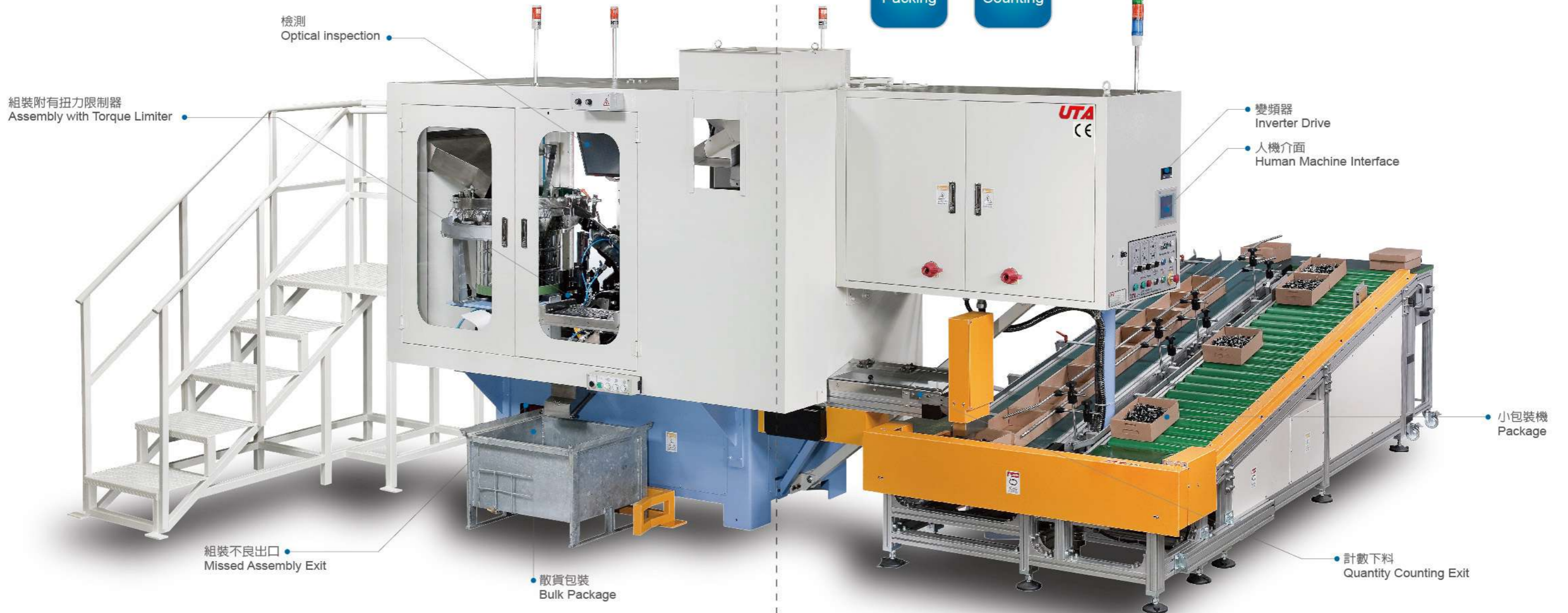
特色與好處

1. 結合檢測，計數與包裝於裝配專用機內。
2. 自動篩選組裝不良的工件。
3. 送料與組裝過程均有感應器與程式控制，可自動停機或啓動。
4. 附有扭力限制器，可延長機器壽命。
5. 變頻驅動，可快速調整組裝速度。
6. 操作面板可顯示停機原因與生產數量，有利控管產能。
7. 結合自動組裝與包裝系統，可有效節省人力與空間。
8. 整合數位化設備，可即時提供品質與產量訊息。
9. 專業的研發團隊，可依據客戶需求客製機器。

應用

多件式緊固件裝配，

- 拉釘
- 螺紋釘
- 鑽尾螺絲
- 鏈帶螺絲
- 木螺絲
- 壁虎釘
- 水泥擊釘
- 鋼釘線扣等。



Multi-Grip Blind Rivet Automatic Assembly & Crimping Machine

拉釘自動組合&夾頭專用機



Specification 規格表 OEM / ODM available

Model	Body (OD) mm / inch	Body (L) mm / inch	Stem (OD) mm / inch	Stem (L) mm / inch	Speed (PPM)	Remark
LB04-32	3.2 - 4.0 4.8 - 6.4	6 ~ 10, 8 ~ 19, 19 ~ 25, 25 ~ 32	1.8 - 2.2 2.7 - 3.9	40 ~ 60, 48 ~ 60, 50 ~ 70	100 250	multi-grip
	1/8" - 5/32" 3/16" - 1/4"	0.236" ~ 0.394", 0.315" ~ 0.748", 0.748" ~ 0.984", 0.984" ~ 1.260"	0.071" ~ 0.087", 0.106" ~ 0.154"	1.575" ~ 2.362", 1.890" ~ 2.362", 1.969" ~ 2.756",		
	4.8 3/16"	8 ~ 19 0.315" ~ 0.748"	2.9 0.114"	38 ~ 48 1.496" ~ 1.890"		
LB13-25	3.2 - 4.0 4.8 - 6.4	8 ~ 19, 19 ~ 25,	1.8 - 2.2 2.7 - 3.9	70 ~ 90		long stem
	1/8" - 5/32" 3/16" - 1/4"	0.315" ~ 0.748", 0.748" ~ 0.984"	0.071" ~ 0.087", 0.106" ~ 0.154"	2.756" ~ 3.543"		long stem

Machine size (L x W x H): 1,370 x 1,650 x 2,280 mm, N.W: 1,670 KG, with safety cover



Blind Rivet Assembly Machine (plus Inline Counting & Packing Unit)

拉釘自動組合專用機
(加線上計數自動包裝系統)



Specification 規格表 OEM / ODM available

Model	Body (OD) mm / inch	Body (L) mm / inch	Stem (OD) mm / inch	Stem (L) mm / inch	Speed (PPM)	Remark
LD04-32	3.2 - 4.0 4.8 - 6.4	6 ~ 10, 8 ~ 19, 19 ~ 25, 25 ~ 32	1.8 - 2.2 2.7 - 3.9	40 ~ 60, 48 ~ 60, 50 ~ 70	250 450	
	1/8" - 5/32" 3/16" - 1/4"	0.236" ~ 0.394", 0.315" ~ 0.748", 0.748" ~ 0.984", 0.984" ~ 1.260"	0.071" ~ 0.087", 0.106" ~ 0.154"	1.575" ~ 2.362", 1.890" ~ 2.362", 1.969" ~ 2.756",		
	4.8 3/16"	8 ~ 19 0.315" ~ 0.748"	2.9 0.114"	38 ~ 48 1.496" ~ 1.890"		
LD05-32	3.2 - 4.0 4.8 - 6.4	6 ~ 10, 8 ~ 19, 19 ~ 25, 25 ~ 32	1.8 - 2.2 2.7 - 3.9	40 ~ 60, 48 ~ 60, 50 ~ 70	250 450	for boxing unit model
	1/8" - 5/32" 3/16" - 1/4"	0.236" ~ 0.394", 0.315" ~ 0.748", 0.748" ~ 0.984", 0.984" ~ 1.260"	0.071" ~ 0.087", 0.106" ~ 0.154"	1.575" ~ 2.362", 1.890" ~ 2.362", 1.969" ~ 2.756",		
CF02-1000	Minimum package: 50 pcs per box, box size (L x W x H): 140x130x225mm (bespoke)					
LM01-7	3.2 (1/8)	7.7 (0.303)	4.0 (0.157)	5.5 (0.216)	100 ~ 150	2 pc assembly

Assembly machine size (L x W x H): 1,950 x 1,380 x 2,350 mm, N.W: 1,072 KG, with safety cover. (LD)

Assembly machine size (L x W x H): 1,860 x 1,380 x 2,120 mm, N.W: 900 KG, with safety cover. (LM)



Blind Rivet & Washer Automatic Assembly Machine (3 pc) - plus Inline Optical Sorting, Counting & Packing

拉釘與墊片自動組合專用機 (3pc)
結合線上影像檢測，計數與包裝設備



Specification 規格表 OEM / ODM available

Model	Body OD mm	Body L mm	Stem OD mm	Stem L mm	Gasket OD mm	Speed (PPM)	Remark
LE01-30	6.4-7.5 (0.251-0.295)	12.4 ~ 30.4 (0.488 ~ 1.197)	3.65 (0.143)	47 ~ 88 (1.850 ~ 3.465)	11 (0.433) 12.1-13.8-14.1 (0.476-0.543 -0.555)	210	3 pc assembly
CCD	Inline Optical Sorting 線上影像檢驗系統						
CF03	Inline Counting & Packing 線上計數包裝系統						
LE02-20	4.0 (5/32)	8 ~ 20 (0.315 ~ 0.787)	2.07-2.55 (0.081 ~ 0.100)	59 (2.323)	6.5 x 12L (0.256 x 0.472)	100 ~ 150	3 pc assembly

Machine size (L x W x H): 3,700 x 1,800 x 2,300 mm, N.W.: 2,500 KG (LE01)

Conveyor size (L x W x H): 3,600x1,350x90, N.W.: 25

Machine size (L x W x H): 3,570 x 1,900 x 2,250 mm, N.W.: 1,860 KG (LE02)



Blind Rivet Automatic Assembly Machine

拉釘自動組合專用機



Specification 規格表 OEM / ODM available

Model	Body (OD) mm / inch	Body (L) mm / inch	Stem (OD) mm / inch	Stem (L) mm / inch	Speed (PPM)	Remark
LA01-12	2.4 (3/32")	6 ~ 12 (0.236 ~ 0.472)	1.3 (0.051)	36 ~ 50 (1.417 ~ 1.969)	250 ~ 450	short rivet
	3.2 (1/8")	6 ~ 12 (0.236 ~ 0.472)	1.8 (0.071)	36 ~ 50, 40 ~ 55 (1.417 ~ 1.969), (1.575 ~ 2.165)	300 ~ 450	short rivet
LA01-30	4.0 (5/32")	8 ~ 30 (0.315 ~ 1.181)	2.2 (0.087)	45 ~ 60, 50 ~ 65 (1.772 ~ 2.362), (1.969 ~ 2.559)	300 ~ 450	
	4.8 (3/16")	8 ~ 30 (0.315 ~ 1.181)	2.7 (0.106)	45 ~ 60, 50 ~ 65 (1.772 ~ 2.362), (1.969 ~ 2.559)	300 ~ 450	
LA07-41	4.0 (5/32")	16 ~ 38 (0.630 ~ 1.496)	2.2 (0.087)	55 ~ 70 (2.165 ~ 2.756)	250 ~ 300	long rivet
	4.8 (3/16")	16 ~ 38 (0.630 ~ 1.496)	2.7 (0.106)	55 ~ 70 (2.165 ~ 2.756)	250 ~ 300	long rivet
LA12-6	6.4 (1/4")	19 ~ 41 (0.748 ~ 1.614)	3.9 (0.154)	50 ~ 72 (1.968 ~ 2.835)	150 ~ 250	long rivet
	3.0 (0.118)	2.5 ~ 6.3 (0.098 ~ 0.248)	1.8 (0.071)	35 (1.378)	100 ~ 200	short rivet

Machine size (L x W x H): 2,820 x 1,390 x 2,420 mm, N.W: 1,080 KG, with safety cover

Machine size (L x W x H): 1,500 x 900 x 1,800 mm, N.W: 700 KG, without safety cover



Washer Blind Rivet Automatic Assembly Machine

華司拉釘自動組合專用機

Specification 規格表 OEM / ODM available

Model	Blind Rivet (OD) mm (inch)	Blind Rivet (L) mm (inch)	Washer (OD) mm (inch)	Washer (T) mm (inch)	Speed (PPM)	Remark
LI01-	5.2 (0.205)	14 ~ 46 (0.551 ~ 1.811)	7.9 (0.311)	1.09 (0.043)	60 ~ 80	2 pc assembly

Assembly machine size (L x W x H): 1,550 x 1,600 x 1,900 mm, N.W: 790 KG, with safety cover (LI)



Blind Rivet Automatic Disassembly Machine

拉釘自動分離專用機

Specification 規格表 OEM / ODM available

Model	Rivet (OD) mm / gauge	Rivet (L) mm (inch)	Stem (L) mm (inch)	Speed (PPM)	Remark
LH01-30	3.2 - 4.0 - 4.8 (1/8 - 5/32 - 3/16)	10 ~ 30 (0.394 ~ 1.181)	65 ~ 70 (2.559 ~ 2.756)	100 ~ 150	1 pc disassembly

Assembly machine size (L x W x H): 1,550 x 1,600 x 1,900mm, N.W: 730 KG, with safety cover (LH)



Drive Pin Automatic Assembly Machine

擊釘自動組合專用機

Specification 規格表 OEM / ODM available

Model	Nail (OD) mm (inch)	Nail (L) mm (inch)	Washer (OD) mm (inch)	Washer (T) mm (inch)	Speed (PPM)	Remark
SC01-54	3.7 - 4.0 (0.146 - 0.157)	14 ~ 54 (0.551 ~ 2.126)	8.2 - 11.8 (0.323 - 0.465)	1.5 (0.059)	120 ~ 200	2 pc assembly
SG02-75	3.7 (0.146)	25 ~ 75 (0.984 ~ 2.953)	11.7 (0.461)	1.5 (0.059)	200 ~ 350	2 pc assembly

Assembly machine size (L x W x H): 1,850 x 1,900 x 2,400 mm, N.W: 1,790 KG, with safety cover.(SC)

Wiring Cabinet size (L x W x H): 600 x 500 x 1,000 mm(SC)

Assembly machine size (L x W x H): 1,700 x 1,800 x 1,700 mm, N.W: 980 KG, with safety cover. (SG)



Washer Automatic Assembly Machine

(plus Inline Counting & Packing Unit)

華司自動組合專用機 (加線上計數自動包裝系統)

Specification 規格表 OEM / ODM available

Model	Screw (OD) mm / gauge	Screw (L) mm (inch)	Washer (OD) mm (inch)	Speed (PPM)	Remark
SD01-75	4.2 ~ 6.5 #8 ~ #14	19 ~ 75 (0.748 ~ 2.953)	12 ~ 25 (0.472 ~ 0.984)	250 ~ 600	2 pcs screw assembly
SD03-50	M6 ~ M12 (1/4" ~ 1/2")	19 ~ 50 (0.748 ~ 1.969)	8 ~ 19 (0.315 ~ 0.148)	100 ~ 250	2 pcs bolt assembly
SD05-75	3.5 (1/8")	19 ~ 75 (0.748 ~ 2.953)	8 ~ 19 & 16 ~ 25 (0.748 ~ 2.953) & (0.630 ~ 0.984)	100 ~ 250	3 pcs nail assembly
SD09-90	4.2 ~ 6.5 #8 ~ #14	19 ~ 90 (0.748 ~ 3.54)	12 ~ 25 (0.472 ~ 0.984)	200 ~ 500	2 pcs assembly
SD14-75	4.2 ~ 6.5 #8 ~ #14	19 ~ 75 (0.748 ~ 2.953)	12 ~ 16 (0.472 ~ 0.630)	250 ~ 1,000	2 pc assembly
SD16-150	4.2 ~ 6.5 #8 ~ #14	25 ~ 150 (0.984 ~ 5.906)	12 ~ 19 (0.472 ~ 0.148)	100 ~ 250	2 pcs non-s/s long screw assembly
SL01-200	4.8 ~ 6.5 #10 ~ #14	25 ~ 200 (0.984 ~ 7.874)	14 ~ 25 (0.551 ~ 0.984)	80 ~ 150	2 pcs long screw assembly
SD20-75	4.2 ~ 6.5 #8 ~ #14	19 ~ 75 (0.748 ~ 2.953)	12 ~ 25 (0.472 ~ 0.984)	250 ~ 600	2 pcs assembly for CF boxing unit
CF01-1000	Minimum package: 50 pcs per box, box size (L x W x H): 120 x 120 x 110 mm (bespoke)				for SD20-75
SD23-50	M6 ~ M12 (1/4" ~ 1/2")	19 ~ 50 (0.748 ~ 1.969)	8 ~ 19 (0.315 ~ 0.148)	100 ~ 250	2 pc bolt assembly, for CF boxing unit
CF04-1000	Minimum package: 50 pcs per box, box size (L x W x H): 120 x 120 x 110 mm (bespoke)				for SD23-50

Assembly machine size (L x W x H): 1,800 x 1,500 x 1,500 mm, N.W: 1,160 KG, with safety cover (SD01 / SD05 / SD09 / SD20 / SD23)

Assembly machine size (L x W x H): 2,300 x 2,650 x 2,100 mm, N.W: 1,500 KG, with safety cover (SD14)

Assembly machine size (L x W x H): 1,900 x 1,500 x 1,780 mm, N.W: 2,150 KG, with safety cover (SD16)

Assembly machine size (L x W x H): 3,700 x 2,500 x 2,800 mm, N.W.: 2,330 KG, with safety cover (SL01)

Boxing unit (L x W x H): 1,130 x 600 x 670 mm, N.W.: 130 KG (CF01 / CF04)



BAZ Washer Automatic Assembly Machine

碗型華司自動組合專用機

Specification 規格表 OEM / ODM available

Model	Screw (OD) mm / gauge	Screw (L) mm (inch)	Bowl Washer (OD) mm (inch)	Metal Washer (OD) mm (inch)	Speed (PPM)	Remark
SM01-150	6.3 (1/4") #14	40 ~ 150 (1.57" ~ 5.91")	25(0.984)	24(0.945)	130 ~ 150	2 pc BAZ washer assembly, 3 pc screw assembly

Assembly machine size (L x W x H): 2,760 x 1,930 x 2,161 mm, N.W: 2,745 KG, with safety cover. (SM01-150)

Vertical conveyor size (L x W x H): 2,965 x 538 x 2,830 mm, N.W.: 650 KG.

Hopper size (L x W x H): 970 x 1,040 x 860 mm, N.W.: 200KG



M-Type Washer Automatic Assembly Machine

M-type 華司自動組合專用機

Specification 規格表 OEM / ODM available

Model	Screw (OD) mm / gauge	Screw (L) mm (inch)	Washer (OD) mm (inch)	Speed (PPM)	Remark
SA02-120	4.5#9	20 ~ 120 (0.787 ~ 4.724)	15 - 20 (0.591 - 0.787)	100 ~ 200	2 pc assembly

Assembly machine size (L x W x H): 1,890 x 1,450 x 1,620 mm, N.W: 1,500 KG, without safety cover.



Bowl Washer Automatic Assembly Machine

Bowl 華司自動組合專用機

Specification 規格表 OEM / ODM available

Model	Screw (OD) mm / gauge	Screw (L) mm (inch)	Washer (OD) mm (inch)	Washer (OD) mm (inch)	Speed (PPM)	Remark
SJ01-75	4.5#9	25 ~ 75 (0.984 ~ 2.953)	15 - 20 - 25 (0.591 - 0.787 - 0.984)	13 - 18 - 23 (0.512 - 0.709 - 0.906)	150 ~ 200	2 or 3 pc assembly
SJ03-150	5.2 (0.204") #11 - 6.3 (1/4") #14	40 ~ 150 (1.57" ~ 5.91")	15.3 - 25 (0.602 - 0.984)	19 - 24 (0.748 - 0.945)	60 ~ 120	2 or 3 pcs assembly
SJ04-90	3.6 M5	25 ~ 90 (0.984 ~ 3.543)	20.1 (0.791)	20.1 (0.791)	150 ~ 250	2 pc assembly

Assembly machine size (L x W x H): 1,800 x 1,550 x 1,500 mm, N.W: 1,225 KG, without safety cover. (SJ01)
 Assembly machine size (L x W x H): 2,200 x 1,550 x 1,800 mm, N.W: 1,720 KG, with safety cover (SJ03 & SJ04)



Roof Nail Automatic Assembly Machine

屋頂釘帽蓋自動組合專用機

Specification 規格表 OEM / ODM available

Model	Nail (OD) mm (inch)	Nail (L) mm (inch)	Housing (OD x H) mm (inch)	Lid (OD x H) mm (inch)	Speed (PPM)	Remark
SK01-70	3.45(1/8)	70(2.756)	18 x 9.15 (0.709 x 0.360)	11 x 6 (0.433 x 0.236)	100	3 pc assembly

Assembly machine size (L x W x H): 1,700 x 2,100 x 1,900 mm, N.W: 2,100 KG, with safety cover



Collated Screw Automatic Assembly Machine

鏈帶螺絲自動組合專用機

Specification 規格表 OEM / ODM available

Model	Screw (OD) mm / gauge	Screw (L) mm (inch)	Strip Pitch	Strip T	Speed (PPM)	Remark
ST02-70	3.4 ~ 4.0 (1/8 ~ 5/32)	20 ~ 70 (0.787 ~ 2.756)	10 (0.394)	1.3 ~ 2.0 (0.051 ~ 0.079)	300 ~ 500	2 pc assembly, with oven, conveyor
SP01-35	3.5 - 3.9 - 4.2 (0.137 - 0.153)	12 ~ 35 (0.472 ~ 1.378)	10 (0.394)	1.3 ~ 2.0 (0.051 ~ 0.079)	100 ~ 150	3 ~ 8 pc screw in one belt, 2 pc assembly

Assembly machine size (L x W x H): 2,100 x 1,800 x 1,700 mm, N.W: 1,690 KG, with safety cover. (ST)
 Conveyor size (L x W x H): 2,100 x 650 x 600, N.W.: 87 KG
 Oven size (L x W x H): 700 x 200 x 1,100, N.W.: 55 KG
 Assembly machine size (L x W x H): 1,670 x 1,730 x 2,050 mm, N.W: 820 KG, with safety cover. (SP)



Cable Clip Automatic Assembly Machine

電線固定夾自動組合專用機

Specification 規格表 OEM / ODM available

Model	Clip Height mm (inch)	Nail Length mm (inch)	Speed (PPM)	Remark
SB03-13	< 13 (< 0.512)	L < 44 (< 1.732)	50-70	dual nails, nail distance < 22 (0.866)
SB04-09	6 ~ 9 (0.236 ~ 0.354)	11 ~ 15 (0.433 ~ 0.591)	50 ~ 110	single nail
SB04-15	< 15 (< 0.591)	< 25 (< 0.984)		
SB05-25	16 ~ 25 (0.630 ~ 0.984)	26 ~ 39 (1.024 ~ 1.535)		
SB06-45	26 ~ 45 (1.024 ~ 1.772)	40 ~ 55 (1.575 ~ 2.165)	100 ~ 120	single nail
SB10-20	14 (0.551)	16 ~ 20 (0.629 ~ 0.787)		
SB11-25	25 (0.984)	41 (1.614)		

Assembly machine size (L x W x H): 2,250 x 1,520 x 2,200mm, N.W: 830 KG, with safety cover (SB04/SB05/SB06/SB10)
 Assembly machine size (L x W x H): 1,910 x 1,400 x 1,800mm, N.W: 750 KG, without safety cover (SB11)



Hammer Drive Anchor Automatic Assembly Machine 金屬壁虎釘自動組合專用機

Specification 規格表 OEM / ODM available

Model	Anchor (OD) mm (inch)	Anchor (L) mm (inch)	Nail (OD) mm (inch)	Nail (L) mm (inch)	Speed (PPM)	Remark
LZ07-50	6.0 (0.236)	25 ~ 50 (0.984 ~ 1.969)	3.7 (0.146)	34 ~ 58 (1.339 ~ 2.283)	200	2 pc assembly

Assembly machine size (L x W x H): 2,000 x 1,300 x 1,850 mm, N.W: 1,143 KG, with safety cover



Plastic Anchor Automatic Assembly Machine 塑膠壁虎釘自動組合專用機

Specification 規格表 OEM / ODM available

Model	Anchor (OD) mm (gauge)	Anchor (L) mm (inch)	Screw (OD) mm (inch)	Screw (L) mm (inch)	Speed (PPM)	Remark
LZ05-80	5 - 6 - 8 - 10 (3/16 - 1/4 - 5/16 - 3/8)	35 ~ 80 (1.378 ~ 3.150)	3.5 - 3.9 - 4.9 - 6.9 (0.138 - 0.154 - 0.193 - 0.272)	40 ~ 85 (1.575 ~ 3.346)	250 ~ 600	2 pc assembly
LZ08-80						2 pcs assembly CF boxing unit model
CF01-1000	Minimum package: 50 pcs per box, box size (L x W x H): 120 x 120 x 110 mm (bespoke)					
LZ06-150	5 - 6 - 8 - 10 (3/16 - 1/4 - 5/16 - 3/8)	35 ~ 150 (1.378 ~ 5.906)	3.5 - 3.9 - 4.9 - 6.9 (0.138 - 0.154 - 0.193 - 0.272)	40 ~ 155 (1.575 ~ 6.102)	150 ~ 250	Long screw 2 pc assembly

Assembly machine size (L x W x H): 1,940 x 1,680 x 2,100 mm, N.W: 1,440 KG, with safety cover (LZ05 / LZ08)

Assembly machine size (L x W x H): 1,960 x 1,780 x 1,800 mm, N.W: 2,100 KG, with safety cover (LZ06)

Boxing unit (L x W x H): 1,150 x 600 x 670 mm, N.W: 150 KG



Collar Screw Automatic Assembly Machine 套環螺絲自動組合專用機

Specification 規格表 OEM / ODM available

Model	Screw (OD) mm / gauge	Screw (L) mm (inch)	Collar (OD) mm (inch)	Collar (H) mm (inch)	Speed (PPM)	Remark
SQ01	3.5-4.1	8~19	9.1-11-11.5-13	5.7-7.5-5.8-7	50~60	2 pc assembly

Assembly machine size (L x W x H): 1,140 x 1,110 x 2,300 mm, N.W: 1,010 KG, with safety cover (SQ)



Sleeve Bolt Automatic Assembly Machine 套環螺柱自動組合專用機

Specification 規格表 OEM / ODM available

Model	Bolt (OD) mm (inch)	Bolt (L) mm (inch)	Sleeve (OD) mm (inch)	Sleeve (L) mm (inch)	Speed (PPM)	Remark
SR01	7.8 (0.307)	25 ~ 40 (0.984 ~ 1.575)	10.2 (0.401)	8 (0.315)	50 ~ 80	2 pc assembly

Assembly machine size (L x W x H): 2,030 x 1,640 x 1,880 mm, N.W: 1,170 KG, with safety cover (SR)



Snow Tire Stud Pin Automatic Assembly Machine 雪胎釘柱自動組合專用機

Specification 規格表 OEM / ODM available

Model	Stud (ODxH) mm	Stud (H) mm (inch)	Pin (ODxL) mm (inch)	Pin (L) mm (inch)	Speed (PPM)	Remark
SN01-8	8.5x7.4	8.8 (0.346)	2.6 (0.102)	5.5 (0.216)	150 ~ 200	Load Cell, CCD, 2 pc assembly,
SN02-8	8.6x8.2 / 8.5x7.6	8.8 (0.346)	2.6 (0.102)	5.8 (0.228)	150 ~ 200	Load Cell, CCD, 2 pc assembly,

Assembly machine size (L x W x H): 1,200 x 950 x 1,850 mm, N.W: 1,300 KG, with safety cover (SN)



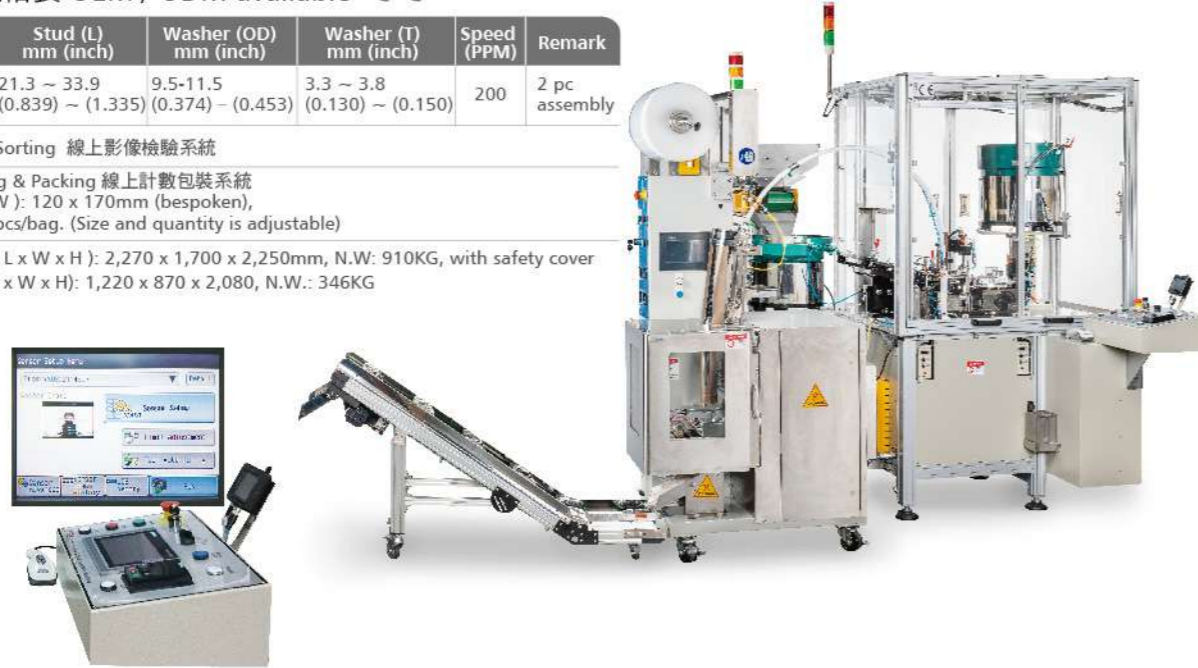
Washer Stud Automatic Assembly Machine, plus Inline Optical Sorting, Counting & Packing

螺柱華司自動組合專用機，結合線上影像檢測，計數與包裝設備

Specification 規格表 OEM / ODM available

Model	Stud (OD) mm / gauge	Stud (L) mm (inch)	Washer (OD) mm (inch)	Washer (T) mm (inch)	Speed (PPM)	Remark
SS01	M8-M10-3/8	21.3 ~ 33.9 (0.839) ~ (1.335)	9.5-11.5 (0.374) ~ (0.453)	3.3 ~ 3.8 (0.130) ~ (0.150)	200	2 pc assembly
CCD	Inline Optical Sorting 線上影像檢驗系統					
Packing machine	Inline Counting & Packing 線上計數包裝系統 Bag size (L x W): 120 x 170mm (bespoke), Quantity: 100pcs/bag. (Size and quantity is adjustable)					

Assembly machine size (L x W x H): 2,270 x 1,700 x 2,250mm, N.W.: 910KG, with safety cover
Packing machine size (L x W x H): 1,220 x 870 x 2,080, N.W.: 346KG



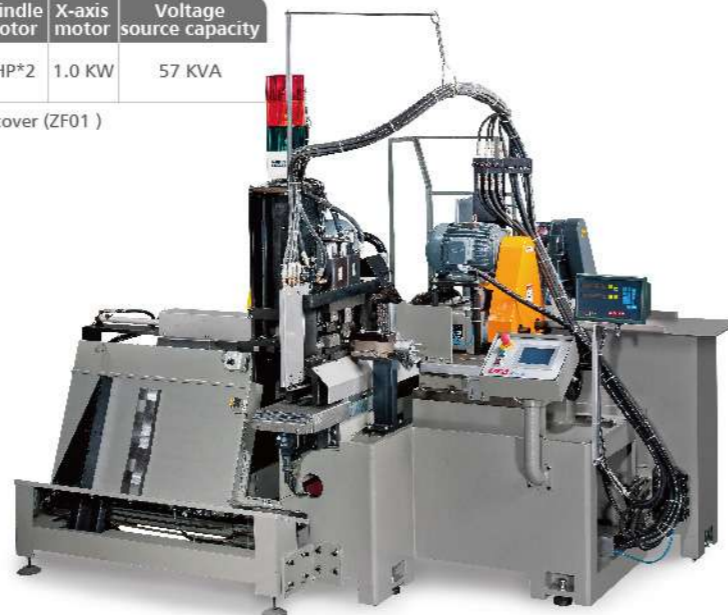
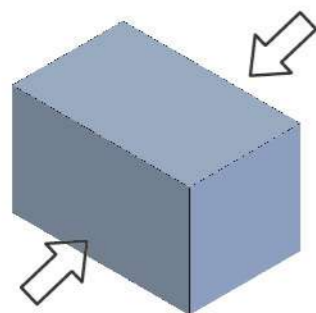
Twin Headed Milling Machine

雙面銑削機

Specification 規格表 OEM / ODM available

Model	Index table	W x L of workpiece	Max .thickness of workpiece	Rapid feed speed X-axis	Shape of spindle noses	Spindle motor	X-axis motor	Voltage source capacity
ZF01	900 mm	30-100 x 25-110 mm	50mm	32 m/min	NT50#	5HP*2	1.0 KW	57 KVA

Assembly machine size (L x W x H): 2,700 x 1,700 x 2,400mm, without safety cover (ZF01)



How to make blind rivets. 拉釘生產流程

• Body 帽頭 :



• Stem 釘蕊 :



• Assembly Body & Stem 裝配帽頭與釘蕊 :



How to make self-drilling screws. 自攻螺絲生產流程

• Screw 螺絲 :



• Washer 華司 :



• Assembly screw and washer 裝配螺絲與華司 :

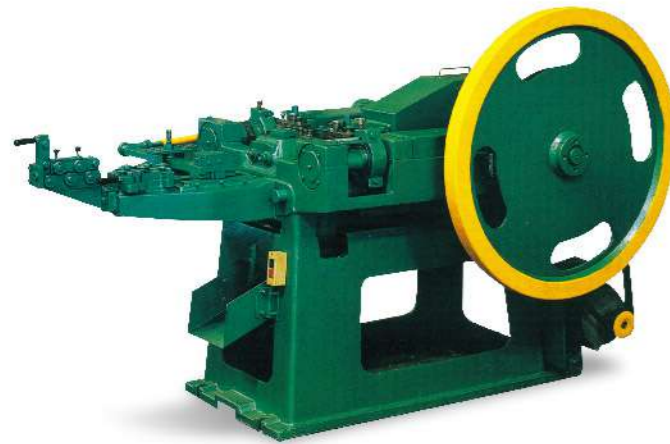
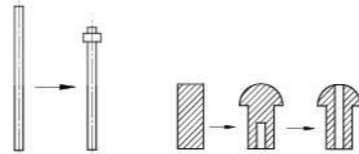


Heading Machine 打頭機

Specification 規格表 OEM / ODM available

Model	Max Capacity - mm	Speed - ppm	Pko - mm	Heading Die Diameter - mm	Punch Dia. - mm	Cut-off Dia. - mm	Cutter	Stroke - mm	Remark
UBH-2015 Screw	6 x 65	100 - 200	15	42 x 38 x 100 L	31 x 95 L	23 x 40 L	11 x 75 L	120	2-die 2-blow
UBH-2015 Blind Rivet	5 x 25	100 - 200	15	42 x 38 x 100 L	31 x 95 L	23 x 40 L	11 x 75 L	120	2-die 2-blow
UBH-2015 Semi Tubular	6 x 50	100 - 200	15	42 x 38 x 100 L	31 x 95 L	23 x 40 L	11 x 75 L	120	2-die 2-blow
UBH-3020 Screw	6.4 x 100	80 - 180	20	48 x 42 x 130 L	38 x 120 L	32	16	200	3-die 3-blow
UBH-3020 Semi Tubular	6.4 x 80	50 - 140	20	48 x 42 x 130 L	38 x 120 L	32	16	200	3-die 3-blow

Machine size (L x W x H): 2,660 x 1,400 x 1,900 mm, N.W: 3,300 KG (UBH-2015)
Machine size (L x W x H): 3,250 x 1,850 x 1,680 mm, N.W: 7,200 KG (UBH-3020)



Nail Making Machine 製釘機

Specification 規格表 OEM / ODM available

Model	Max OD x L - mm	Production - ppm	Motor - HP	Machine Size	N. W. - kg
UBN-2	2.4 x 45	300 - 350	3	1,750 x 1,200 x 1,170	1,000
UBN-3	3.4 x 75	220 - 280	3	1,900 x 1,250 x 1,250	1,150
UBN-4	4.2 x 100	200 - 250	5	2,300 x 1,500 x 1,350	1,900



Hardware Painting Machine 小五金噴漆機

Specification 規格表 OEM / ODM available

Model	Volume - l	Paint Type
UBC-1	15	Epoxy

Machine size (L x W x H): 1,300 x 870 x 1,850 mm, N.W: 450 KG



Vibratory Polishing Machine 三次元振動研磨機

Specification 規格表 OEM / ODM available

Model	Volume - l	Max Load Weight - kg	Bowl Diameter - mm	Motor - HP	Overall Height	N. W. - kg	Remark
UB-250	250	650	1,170	5	1,310	600	



Dehydration Dryer Machine 脫水烘乾機

Specification 規格表 OEM / ODM available

Model	Loading Volume - l	Bowl ID - mm	Bowl Depth - mm
UBD-5	70	506	352

Hexagon De-burr Machine 六角去毛邊機

Specification 規格表 OEM / ODM available

Model	Loading Volume - l	Machine (LxWxH) - mm
UHB-300	300	1,440 x 680 x 1,400



Dehydration De-oil Machine 離心式脫油機

Specification 規格表 OEM / ODM available

Model	Loading Volume - l	Machine (LxWxH) - mm
UHD-22	28	1,170 x 1,170 x 620

Self-Drilling Screw Forming Machine

鑽尾螺絲成型機

Specification 規格表 OEM / ODM available

Model	Bland Dia. - mm	Length - mm	Point No.	Production - ppm
USF-100	2.8 - 4.8 (#6 - #10)	9.5 - 100 (3/8" - 4")	1 - 3	120 - 600
USF-200	2.4 - 5.4 (#4 - #14)	9.5 - 200 (3/8" - 7/8")	1 - 6	100 - 600

Machine size (L x W x H): 1,600 x 1,900 x 1,650 mm, N.W: 1,850 KG (USF-100)
Machine size (L x W x H): 1,650 x 2,250 x 1,800 mm, N.W: 2,400 KG (USF-200)



Self-Drilling Screw Threading Machine

鑽尾螺絲搓牙機

Specification 規格表 OEM / ODM available

Model	Max OD - mm	Max Length -mm	Shank Length - mm	Speed - ppm	Moving Die - mm
UST-75	4 - 8	76	100	120 - 220	108 x 127 x 25

Machine size (L x W x H): 2,700 x 1,400 x 1,700 mm, N.W: 2,300 KG



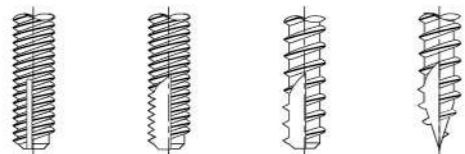
Self-Drilling Screw Point Cutting Machine

鑽尾螺絲割尾機

Specification 規格表 OEM / ODM available

Model	Dia - mm	Length - mm	Production - ppm
USC-100	2.2 - 8.0	10 - 100	120 - 550

Machine size (L x W x H): 1,700 x 800 x 1,300 mm, N.W: 1,000 KG



Conveyor Hopper

輸送帶型儲料斗

Specification 規格表 OEM / ODM available **CE**

Model	Volume cm3	Max Load KG
CA01	23,000	10

Hopper size (L x W x H): 900 x 450 x 700 mm, N.W: 37 KG



Vibratory Hopper

振動型儲料斗

Specification 規格表 OEM / ODM available **CE**

Model	Volume cm3	Max Load KG
CA02	23,000	40

Hopper size (L x W x H): 900 x 450 x 700 mm, N.W: 37 KG



Vertical Vibratory Hopper

直立式振動儲料斗

Specification 規格表 OEM / ODM available **CE**

Model	Hopper Size mm	Max Loading KG
CA03	840 x 800	500

Hopper size (L x W x H): 950 x 1,200 x 2,350 mm, N.W: 200 KG



Skip Lifter 升降式自動倒料機

Specification 規格表 OEM / ODM available **CE**

Model	Max Load KG
CC02	260

Lifter size (L x W x H): 1,500 x 1,450 x 4,050 mm, N.W: 1,500 KG



Chain Lifter 鏈條式倒料機

Specification 規格表 OEM / ODM available **CE**

Model	Max Load KG
CC03	585

Lifter size (L x W x H): 950 x 1,200 x 2,350 mm (without hopper)



Hopper and Chain Conveyor 振動儲料與鏈板式送料機

Specification 規格表 OEM / ODM available **CE**

Hopper size (L x W x H): 970 x 1,040 x 860 mm, N.W: 200 KG
Conveyor size (L x W x H): 2,965 x 538 x 2,830 mm, N.W: 650 KG



Optical Vision System 光學視覺系統

Model and quantity will be various by inspection criterial.
機型和數量會因檢驗項目與標準有所不同。



Box Conveyor CF03 盒子輸送機

Specification 規格表 OEM / ODM available **CE**

Conveyor size (L x W x H): 3,000 x 400 x 900 mm. N.W.:1,500 KG

Roller transportation, applied for larger box. Total weight prior to seals is above 50kg. Connect to UTA assembly machine for quantity package. Minimize the labor and time.
利用滾輪傳動，承載材積較大的盒子，待密封完成大於50KG以上適用降低人工等候，自動運送作業，降低人力搬運

Box Conveyor CF05 盒子輸送機

Specification 規格表 OEM / ODM available **CE**

Conveyor size (L x W x H): 1,200 x 1,300 x 533 mm, N.W.:150 KG

Conveyor transportation, applied for small quantity package. Total weight prior to sealed is less than 50kg. Connect to UTA assembly machine for quantity package. Minimize the labor and time.
利用橡膠皮帶傳動，適合小包裝，待密封總重量小於50KG以下搭配UTA組裝機，連續技術包裝，減少人力計數包裝時間。

